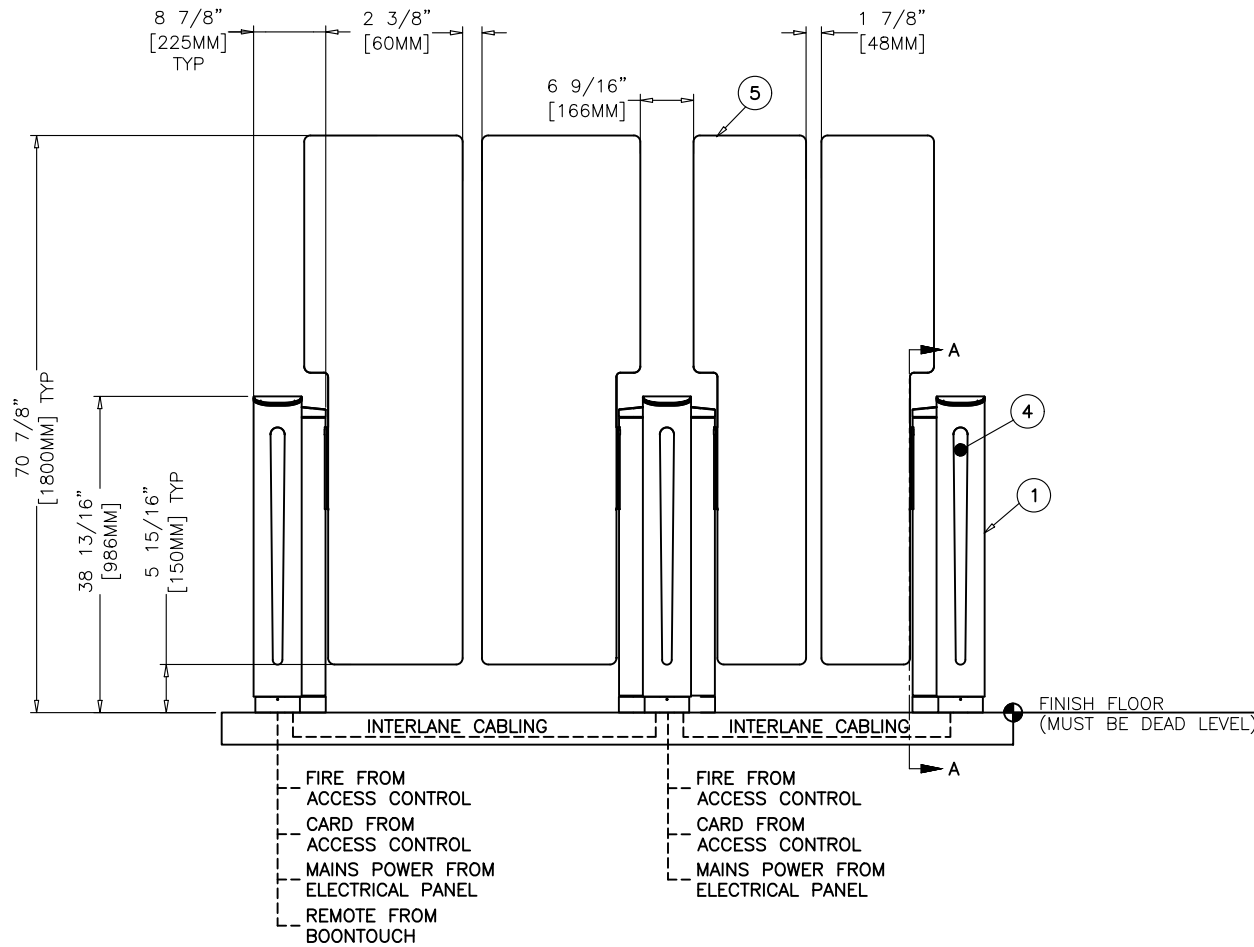
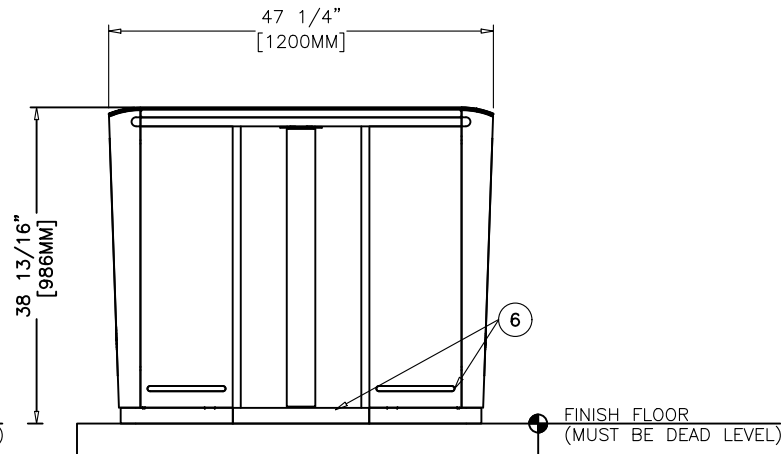


1 PLAN VIEW



2 ELEVATION VIEW



SECTION A-A

3 SIDE VIEW

- ☐ APPROVED AS SUBMITTED
- ☐ APPROVED AS NOTED
- ☐ REVISE AND RESUBMIT

DATE: NAME: SIGNATURE:

COMPANY: POSITION:

GENERAL NOTES:

- UNIT INSTALLS ON FINISH FLOOR.
- FLOOR MUST BE DEAD LEVEL (MAX 3/16" RISE) THROUGHOUT FOOTPRINT.
- UNDERGROUND WIRING CONDUIT REQUIRED.
- OPTIONAL PLATFORM AVAILABLE.
- UNIT IS FREE STANDING – NO VERTICAL STRUCTURAL SUPPORT REQUIRED. ANCHORING TO FLOOR IS REQUIRED.
- ADHERE TO LOCAL CODES DURING INSTALLATION.

CODED NOTES:

- CABINET – #4 STAINLESS STEEL FRONT & SIDE PANELS
- TOP – BLACK POWDER COATED STEEL: 5/32"[4mm] THK
- CARD READER + AUTHORIZATION LIGHT LOCATION.
MAX CARD READER SIZE:
3.9"[99mm]W X 8.8"[223.5mm]L X 1.9"[48mm]H
- FRONT COVER – BLACK ACRYLIC LED WINDOW 1/8"[3.1mm] THK
- CLEAR TEMPERED GLASS BARRIER: 3/8"[10mm] THK
- LOW OBJECT DETECTION SENSORS
- CARD ENTRY / CARD EXIT

ELECTRICAL NOTES:

- REFER TO BOON EDAM INSTALLATION SITE REQUIREMENTS SHEET
- ALL CONDUIT BY OTHERS.

MAINS VOLTAGE OPTIONS:

- 110VAC, 60HZ, SINGLE PHASE (L1,N,PE) 20AMP BREAKER
- 220VAC, 60HZ, DUAL PHASE (L1,L2,PE) 20AMP BREAKER

ACCESS CONTROL SIGNALS:

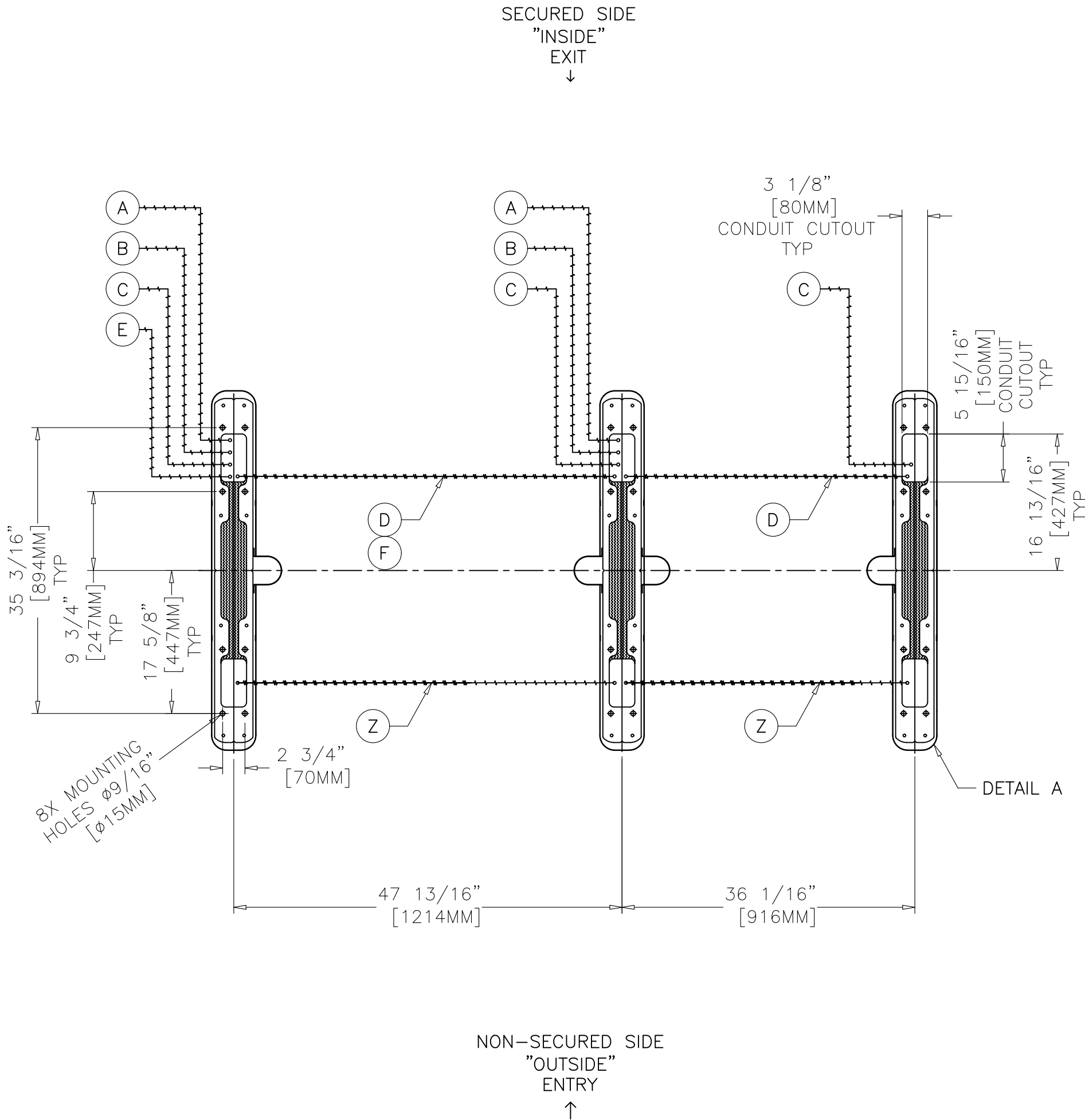
- INPUTS: SEE MANUAL. CARD READ SIGNALS: N/O, 1 SECOND PULSE.
- OUTPUTS: CONFIGURABLE FOR NORMALLY OPEN OR NORMALLY CLOSED. (SEE MANUAL)
- FIRE ALARM: NORMALLY CLOSED DRY CONTACT, SEPERATE SIGNAL TO EACH PRIMARY (CANNOT BE DAISY CHAINED)

BOONTOUCH REQUIRES:

- ONE (1) CAT 6 HOME RUN CABLE FROM BOONTOUCH CONTROL PANEL TO PRIMARY UNIT. BY OTHERS. FOR DETAILS SEE CONDUIT LAYOUT.
- ONE (1) ADDITIONAL CABLE BETWEEN EACH LANE. BY OTHERS.
- ONE (1) CABLE BETWEEN ARRAYS. BY OTHERS. FOR DETAILS SEE CONDUIT LAYOUT.
- MAX 6 LANES PER BOONTOUCH PANEL.

A	CUTSHEET	1-3	1/18/24 EF
REV	DESCRIPTION	PAGE	DATE

REVISION LOG



- GENERAL NOTES:**
- UNIT INSTALLS ON FINISH FLOOR.
 - FLOOR MUST BE DEAD LEVEL (MAX 3/16" RISE) THROUGHOUT FOOTPRINT.
 - UNDERGROUND WIRING CONDUIT REQUIRED.
 - OPTIONAL PLATFORM AVAILABLE.
 - UNIT IS FREE STANDING – NO VERTICAL STRUCTURAL SUPPORT REQUIRED. ANCHORING TO FLOOR IS REQUIRED.
 - ADHERE TO LOCAL CODES DURING INSTALLATION.

- ELECTRICAL NOTES:**
- REFER TO BOON EDAM INSTALLATION SITE REQUIREMENTS SHEET
 - ALL CONDUIT BY OTHERS.

- MAINS VOLTAGE OPTIONS:**
- 110VAC, 60HZ, SINGLE PHASE (L1,N,PE) 20AMP BREAKER
 - 220VAC, 60HZ, DUAL PHASE (L1,L2,PE) 20AMP BREAKER

- ACCESS CONTROL SIGNALS:**
- INPUTS: SEE MANUAL. CARD READ SIGNALS: N/O, 1 SECOND PULSE.
 - OUTPUTS: CONFIGURABLE FOR NORMALLY OPEN OR NORMALLY CLOSED. (SEE MANUAL).
 - FIRE ALARM: NORMALLY CLOSED DRY CONTACT, SEPARATE SIGNAL TO EACH PRIMARY (CANNOT BE DAISY CHAINED).

- SECURE SIDE ONLY:**
- A – ONE CONDUIT FOR MAINS POWER PER PRIMARY CABINET. CAN ALSO BE DAISY CHAINED UP TO 6 PRIMARY CABINETS.
 - B – ONE CONDUIT FOR 2 CONDUCTOR FIRE PER PRIMARY CABINET.
 - C – ONE CONDUIT FOR ACS CABLE – MAX I/O 28 CONDUCTOR.
 - D – ONE 1" CONDUIT FOR BOON EDAM SUPPLIED INTERLANE CABLING ONLY :
 - ONE INTERLANE 3 CONDUCTOR POWER CABLE (+24VDC, 0VDC, GROUND).
 - ONE INTERLANE CAT 6 COMMUNICATION CABLE.
 - 12' USEABLE CABLE SUPPLIED.
 - E – 1/2" X CAT 6 CABLE TO FIRST PRIMARY FROM BOONTOUCH CONTROL PANEL. BY OTHERS.
 - F – 1/2" X CAT 6 CABLE BETWEEN PRIMARIES FOR BOONTOUCH DAISY CHAIN. BY OTHERS. MAX. 6 LANES PER BOONTOUCH PANEL.

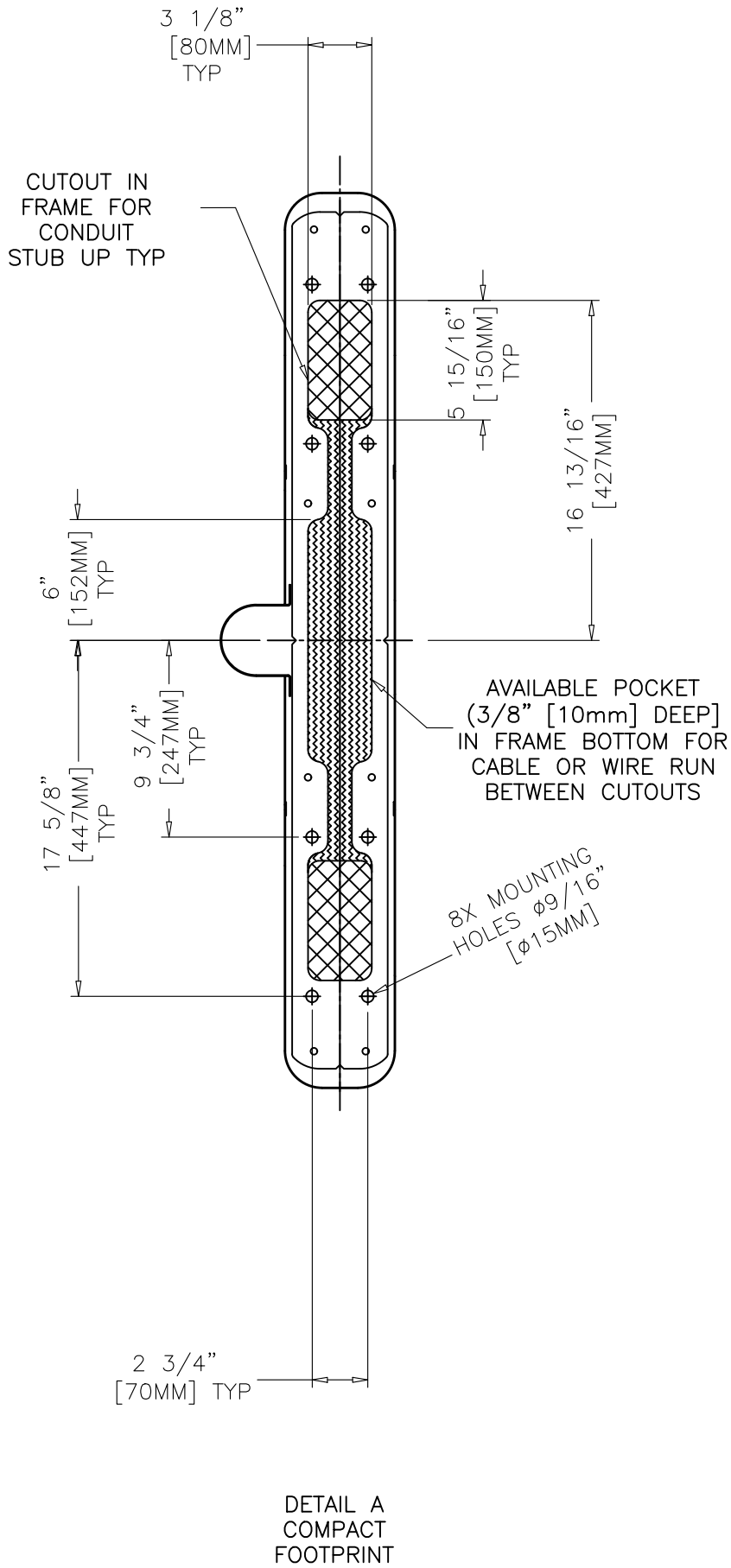
- NON-SECURE SIDE:**
- Z – OPTIONAL LOCATION FOR LOW VOLTAGE CABLING

BOONTOUCH CAN CABLE DETAILS (FOR E, F CABLE RUNS):

- NUMBER OF WIRES: 4 OR 6 CAT 6
- TYPE: TWISTED PAIR
- CORE: 26 OR 28 AWG STRANDED OR TINSEL WIRE
- INSULATION DIAMETER: 0.89–0.99 MM [0.035–0.039"]
- MAXIMUM OVAL CABLE JACKET: 2.29x6.61MM [0.090x0.260"]
- MAXIMUM TOTAL CABLE LENGTH: 100M (325')
- CONNECTORS: RJ12

2 OF 3			
A	CUTSHEET	2 10/3 3	1/18/24 EF
REV	DESCRIPTION	PAGE	DATE

REVISION LOG



3 OF 3			
A	CUTSHEET	310F3 3	1/18/24 EF
REV	DESCRIPTION	PAGE	DATE

REVISION LOG